



# Detect, confirm, act.

Point-of-care ultrasound: see into the body  
without leaving your office.



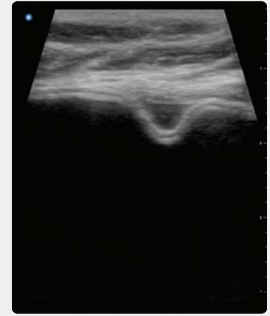
Patient safety is your number one priority, and ours. That is why Butterfly Network is collaborating with Sientra to provide board-certified plastic surgeons with a window into the body.

Butterfly iQ+ is an in-office imaging tool that helps you offer your patients higher quality of care and increased peace of mind.

**Butterfly iQ+™ is designed to make ultrasound easy to use. Simply plug it into your compatible mobile phone or tablet, select your preset and start scanning.**

### **Proactive breast implant surveillance.**

Point-of-care ultrasound supports both pre- and post-operative office screening, to build patient understanding of their options regarding revisions and replacements. It also helps you assess implant integrity, to support efficient surgical scheduling.



### **Seroma drainage.**

Utilization of ultrasound provides a safe, effective method for aspirating seromas, allowing for accurate visualization and delineation of the seroma margins, proper needle placement, and monitoring of progress. It is a simple and useful tool in postprocedural management of patients undergoing surgeries.<sup>1</sup>

### **TAP blocks.**

Butterfly iQ+ provides in-pocket accessibility for nerve block guidance thanks to its high-fidelity B-mode, as well as Needle Viz™, developed specifically for procedural support. Ultrasound-guided peripheral nerve blocks have been associated with higher success rates than traditional anatomical techniques.<sup>2</sup>



**Scan the QR code to purchase your Butterfly iQ+™ now!**

Or go on [bfly.me/SIENTRAEDU2021](https://bfly.me/SIENTRAEDU2021)

Rx only. For use by qualified and trained healthcare practitioners in the USA. For symptomatic patients or patients with equivocal ultrasound results for rupture at any time postoperatively, an MRI is recommended. These recommendations do not replace other additional imaging that may be required depending on patient medical history or circumstances (i.e., screening mammography for breast cancer).

1. [pubmed.ncbi.nlm.nih.gov/21276164/](https://pubmed.ncbi.nlm.nih.gov/21276164/)  
2. [ncbi.nlm.nih.gov/pmc/articles/PMC6465072/](https://ncbi.nlm.nih.gov/pmc/articles/PMC6465072/)